

## **Historic, Archive Document**

Do not assume content reflects current scientific knowledge, policies, or practices.



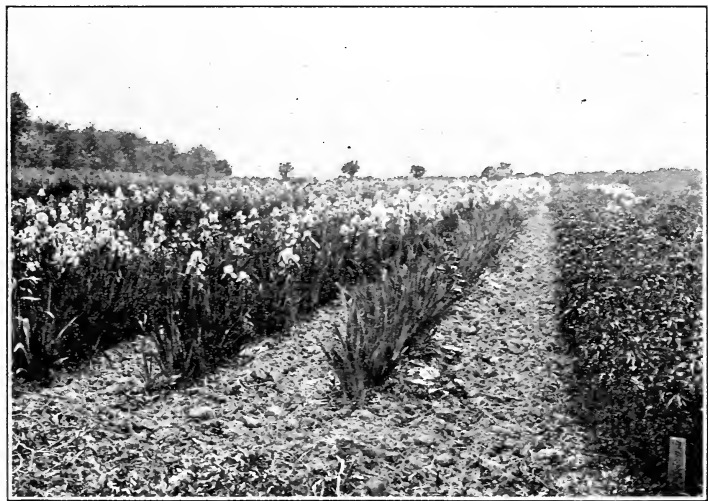
62,73

LIBRARY  
MAY 20 1910  
TWIN LARCHES NURSERY

# FLOWERS

FOR THE

# HARDY GARDEN



Twin Larches Nursery  
WEST CHESTER,  
PENNA.

## Twin Larches Nursery

The nursery is located near the village of Rocky Hill, about four miles east of West Chester, Pa., and the same distance south of Malvern, Pa. Only a short ride from the Paoli to West Chester state road and the Philadelphia and West Chester Pike.

Anyone who is interested in hardy plants is always welcome, and prospective purchasers will find it very satisfactory to make their choice from blooming plants in the field.

Peonies and Irises are generally at their best the first week in June, and the Hardy Phlox is in full bloom the last of July. There is, however a wealth of bloom through the entire season.

The following plant list is made up of stock ready for sale this year, and I can vouch for the genuine worth of every plant offered. I intend never to include a perennial that for some reason is undesirable or even mediocre. I send out strong field grown plants as I find these give far more satisfactory results than pot grown, especially if planted when dormant in early spring and fall.

### TWIN LARCHES NURSERY

LILIAN A. THOMAS

West Chester, Penna.

Phone: Malvern 107R5

## Read Before Ordering

**FORWARDING**—Unless otherwise instructed, all plants will be forwarded by express, purchaser paying charges. If customers wish plants sent by Parcel Post, add 10% to value of order for postage to points east of the Mississippi River and 20% to points west of the Mississippi. (Large plants cannot be sent by mail.)

**PRICES**—All prices are strictly net.

**TERMS**—Customers wishing to open an account should send references from other nurserymen; otherwise terms are cash.

**REMITTANCES**—Should be made by post office or express money order, registered letter or check, to Twin Larches Nursery

**GUARANTEE**—Every effort is made to send out the plants true to name, but if, through error on our part, any plant should prove untrue, we will replace it free of charge. We do not, however, in any way guarantee the success of the grower purchasing stock offered in this list, as failures may be due to causes beyond our control, such as unfavorable weather or soil conditions, or too deep or too shallow planting, etc.

## Herbaceous Perennials

### ACHILLEA. (Milfoil or Yarrow)

	Each	Three	Doz.
Filipendulina. Yellow, 4-5 ft.—July-Aug.	.25	.60	2.00
Millefolium Roseum. Rosy pink, 2 ft.— July-Aug.	.25	.60	2.00
Ptarmica, Boule de Neige. White, 1-2 ft.— July-Oct.	.30	.75	2.50
Ptarmica, The Pearl. White, 1-2 ft.—July-Oct.	.25	.60	2.00

### ACONITUM. (Monkshood)

Sparks Variety. Violet blue spikes, 4 ft.— July-Aug.	.60	1.50	5.00
Fischeri. Light blue spikes, 18 in.—Sept.	.60	1.50	5.00
Wilsoni. Clear blue spikes, 5 ft.—Sept.-Oct.	.75	1.80	6.00

### AJUGA (Bugle weed)

*Genevensis. Blue spikes, 6-8.—May-June	.30	.75	2.50
*Reptans Rubra. Blue, 6-8 in.—May-June	.30	.75	2.50

### ALTHAEA ROSEA (Hollyhocks)

Newport Pink. 4-6 ft., June	.30	.75	2.50
Red. 4-6 ft.—June	.30	.75	2.50
Yellow. 4-6 ft.—June	.30	.75	2.50
Mixed Colors. 4-6 ft.—June	.25	.60	2.00

### ALYSSUM (Rockwort)

*Saxatile Compactum. Bright yellow, 10 in. May	.30	.75	2.50
---	-----	-----	------

### ANCHUSA (Alkanet)

Dropmore. Blue. biennial., 3-4 ft.—May-June	.30	.75	2.50
*Myosotidiflora. Blue, 1 ft.—April-May	.40	1.10	3.50

### ANTHEMIS (Marguerite Daisy)

Tinctoria. Golden yellow, 2-3 ft.—July-Sept.	.30	.75	2.50
Tinctoria Kelwayi. Lemon yellow, 2-3 ft. July-Sept.	.30	.75	2.50

### ANEMONE (Wind Flower)

Japonica Whirlwind. White Double, 2-3 ft.— Aug.-Nov.	.35	1.00	3.00
Japonica Queen Charlotte. Pink, 2-3 ft.— Aug.-Nov.	.40	1.10	3.50
Hupehensis. Mauve Rose, 10-12 in.—Aug.	.35	1.00	3.00

### Aquilegia (Columbine)

*Long Spurred Hybrids. Light colors, 2 ft.— May-June	.30	.75	2.50
Chrysantha. Yellow, 2 ft.—May-June	.30	.75	2.50
Coerulea. Blue shades, 2 ft.—May-June	.30	.75	2.50

Varieties marked with \* are suitable for the Rock Garden.

	Each	Three	Doz.
<b>ARABIS</b> (Rock Cress)			
* <i>Alpina</i> . White, 6 in.—April-May	.30	.75	2.50
<i>Alpina flore-plena</i> . White double, 6 in.—April-May	.30	.75	2.50
<b>ARMERIA</b> (Sea Pink)			
<i>Formosa</i> . (Statice pseudoarmeria) Pink, 10 in.—August	.30	.75	2.50
<b>ARTEMISIA</b> (Sage Brush)			
<i>Vulgaris lactiflora</i> . White, 5-6 ft.—Aug-Sept.	.30	.75	2.50
<i>Stelleriana</i> . (Dusty Miller) Silver foliage., 6 in.	.30	.75	2.50
<b>ASCLEPIAS</b> (Butterfly Weed)			
<i>Tuberosa</i> . Bright orange, 1-2 ft.—July-Aug.	.30	.75	2.50
<b>ASTER</b> (Michaelmas Daisy)			
<i>Climax</i> . Lavender blue, 4-5 ft.—Sept.	.25	.60	2.00
<i>Novae-angliae</i> . Deep Purple, 4 ft.—Sept.	.25	.60	2.00
<i>Novi-belgi</i> , <b>Blue Gem</b> . Blue, double, 4 ft.—Sept.	.35	1.00	3.00
<i>Nori-belgi</i> , <b>St. Egwin</b> . Pink, 3 ft.—Sept.	.30	.75	2.50
<i>Tataricus</i> . Lavender spikes, 5 ft.—Oct.	.25	.60	2.00
<b>ASTILBE</b> (Spirea)			
<i>Arendsi hybrids</i> , <b>Gruno</b> . Bright salmon pink, 3 ft.—July	.75	2.00	6.50
<i>Arendsi hybrids</i> , <b>Salmon Queen</b> . Pink, 2½ ft.—June	.50	1.40	4.00
* <i>Arendsi hybrids</i> , <b>Gladstone</b> . White, 18 in.—June	.50	1.40	4.00
<i>Arendsi hybrids</i> , <b>Queen Alexandra</b> . Pink, 18 in.—June	.50	1.40	4.00
<i>Arendsi hybrids</i> , <b>Moerheimi</b> . Cream white, 2½ ft.—July	.75	2.00	6.50
<b>AUBRIETIA</b>			
* <i>Hybrids</i> . Violet shades. 6 in.—April-May	.35	1.00	3.50
<b>BAPTISIA</b> (Hardy Lupine)			
<i>Australis</i> . Steel blue. 2-3 ft.—June	.30	.75	2.50
<b>BOLTONIA</b> (False Chamomile)			
<i>Latisquama</i> . Pink, 5-6 ft.—Sept.	.25	.60	2.00
<i>Asteroides</i> . White, 5-6 ft.—Sept.	.25	.60	2.00
<b>CARYOPTERIS</b> (Blue Spirea)			
<i>Incana</i> . (mastacanthus) Lavender blue spike, 3 ft.—September	.40	1.10	4.00
<b>CAMPANULA</b> (Bell flower)			
* <i>Carpatica</i> . Light blue., 8 in.—July-Aug.	.35	1.00	3.50
* <i>Carpatica Alba</i> . White, 8 in.—July-Aug.	.35	1.00	3.50
<i>Persicifolia</i> . Lavender blue, 2 ft.—June	.30	.75	2.50
<i>Persicifolia alba</i> . White, 2 ft.—June	.30	.75	2.50
<i>Medium Calycanthema</i> . Blue biennial, 2 ft.—June	.30	.75	2.50

Varieties marked with \* are suitable for the Rock Garden.

	Each	Three	Doz.
<b>CERATOSTIGMA</b> (Plumbago)			
* <b>Plumbaginoides.</b> (p. larpentae) Bright blue, 10 in. June—Oct.	.30	.75	2.50
<b>CERASTIUM</b> (Snow-in-Summer)			
* <b>Tomentosum.</b> White, 8 in.—June	.30	.75	2.50
<b>CONVALLARIA</b> (Lily of the Valley)			
* <b>Majalis.</b> White, 8-12 in.—May	.30	.75	2.50
<b>COREOPSIS</b>			
<b>Lanceolata Grandiflora.</b> Yellow, 2 ft.—June-Oct.	.25	.60	2.00
<b>CHRYSANTHEMUM</b> (Hardy varieties)			
(Blooming October 1st till freezing weather)			
<b>Maid of Kent.</b> White button, 2-3 ft.	.30	.75	2.50
<b>Brown Bessie.</b> Red button, 2ft.	.30	.75	2.50
<b>Twin Larches.</b> Creamy yellow, large flower, 3 ft.	.30	.75	2.50
<b>Selina.</b> Deep lilac pompom, 3 ft.	.30	.75	2.50
<b>Bronze.</b> Bronze red, yellow tips. Large flower, 3 ft.	.30	.75	2.50
<b>Scotland.</b> Clear yellow, large flower, 3 ft.	.30	.75	2.50
<b>Yellow.</b> Yellow button, 2 ft.	.30	.75	2.50
<b>Sunset.</b> Yellow flush pink, 2½ ft.	.30	.75	2.50
<b>Daisy.</b> Deep purple red, 2½ ft.	.30	.75	2.50
<b>Lavender.</b> Clear lavender, large loose flowers, 3 ft.	.30	.75	2.50
(Early blooming varieties)			
<b>Normandie.</b> Cream white, 2 ft.	.35	1.00	3.50
<b>Carmelite (Glory of Seven Oakes).</b> Golden Yellow	.35	1.00	3.50
* <b>Early red.</b> Copper red pompom, 2 ft.	.30	.75	2.50
<b>Early pink.</b> Lavender pink pompom, 3 ft.	.30	.75	2.50
<b>Pink Button.</b> Lavender pink button, 2 ft.	.30	.75	2.50
<b>CHRYSANTHEMUM COCCINEUM</b> (Pyrethrum)			
<b>Roseum.</b> (Painted Daisy) Pink, 2-3 ft.— May-June	.30	.75	2.50
<b>Double.</b> Pink shades, 2-3 ft.—May-June	.35	1.00	3.00
<b>CHRYSANTHEMUM MAXIMUM</b> (Shasta Daisy)			
* <b>Alaska.</b> White, 12-18 in.—July-Sept.	.30	.75	2.50
<b>DAPHNE</b> (Garland flower)			
* <b>Cneorum.</b> Evergreen shrub. Pink, 1 ft.— April-Oct.			
10-12 inches	1.50	4.35	15.00
8-10 inches	1.25	3.60	12.50
<b>DELPHINIUM</b> (Hardy Larkspur)			
<b>Belladonna.</b> Sky blue spikes, 3-4 ft.—June-Aug.	.30	.75	2.50
<b>Bellamosum.</b> Deep blue spikes, 3-4 ft.—June-Aug.	.35	1.00	3.50
<b>Mixed Hybrids.</b> Various shades, 4 ft.—June-Aug.	.40	1.10	3.50
* <b>Chinensis.</b> Deep blue, 2 ft.—June-July			
* <b>Chinensis Album.</b> White, 2 ft.—June-July	.30	.75	2.50

Varieties marked with \* are suitable for the Rock Garden.



	Each	Three	Doz.
<b>DIANTHUS</b> (Pinks and Sweet Williams)			
* <i>Deltoides</i> . Lavender pink, 6 in.—June	.30	.75	2.50
* <i>Plumarius</i> . Various colors, 12 in.—May-June	.30	.75	2.50
* <i>Plumarius</i> . Pink shades, 12 in.—May-June	.30	.75	2.50
<i>Barbatus</i> . Maroon red, 2 ft.—June	.30	.75	2.50
<i>Barbatus</i> . Newport Pink, 2 ft.—June	.30	.75	2.50
<i>Barbatus</i> . Mixed colors., 2 ft.—June	.25	.60	2.00
<i>Latifolius Atroccineus fl. pl.</i> Crimson, 2 ft.— June-Oct.	.30	.75	2.50
<b>DICENTRA</b> (Bleeding Heart)			
<i>Spectabilis</i> . Rosy crimson, 2-3 ft.—May-July	.60	1.50	5.00
* <i>Eximia</i> . Rose pink, 18 in.—May-Oct.	.40	1.10	4.00
<b>DICTAMNUS</b> (Gas Plant)			
<i>Alba fraxinella</i> . White spike, 2-3 ft.—June-Aug.	.55	1.50	5.00
<b>DIGITALIS</b> (Foxglove)			
<i>Pink</i> . Lavender pink biennial, 3-4 ft.—June	.30	.75	2.50
<i>Alba</i> . White biennial, 3-4 ft.—June	.30	.75	2.50
<b>ECHINOPS</b> (Globe Thistle)			
<i>Ritro</i> . Metallic blue, 3 ft.—July	.35	1.00	3.50
<b>EUPATORIUM</b> (Hardy Ageratum)			
* <i>Coelestinum</i> . Bluish lavender, 2 ft.—Aug.-Sept.	.30	.75	2.50
<b>FUNKIA</b> see <b>HOSTA</b>			
<b>GAILLARDIA</b> (Blanket Flower)			
<i>Aristata</i> . ( <i>Grandiflora</i> ) Yellow, red center, 18 in. July-Oct.	.25	.60	2.00
<i>Aristata Sanguinea</i> . Red, 18 in.—July-Oct.	.30	.75	2.50
<b>GEUM</b>			
* <i>Chiloense</i> , <i>Lady Statheden</i> . Golden Yellow, 2 ft. June-Sept.	.35	1.00	3.30
<b>GYPSOPHILA</b> (Baby's Breath)			
<i>Paniculata Flore Pleno</i> . White, 2½ ft. July-Aug.	.30	.75	2.50
Extra size	.50	1.40	5.00
* <i>Repens</i> . White, 6 in.—June-July	.30	.75	2.50
<b>HEUCHERA</b> (Coral Bells)			
* <i>Sangiunea</i> . Coral red, 2 ft.—June-Sept.	.35	1.00	3.30
<b>HELENIUM</b>			
<i>Autumnale Rubrum</i> . Dull orange red, 4-5 ft.—Sept.	.35	1.00	3.30
<b>HELIANTHUS</b> (Hardy Sunflower)			
<i>Miss Mellish</i> . Yellow, 6-8 ft.—Aug.-Sept.	.25	.60	2.00
<i>Autumn Glory</i> . Yellow, 4-5 ft.—Sept.	.35	1.00	3.30
<b>HELIOPSIS</b>			
<i>Golden Glow</i> . Yellow double, 5-6 ft.—Aug. Sept.	.25	.60	2.00

Varieties marked with \* are suitable for the Rock Garden.

	Each	Three	Doz.
<b>HEMEROCALLIS</b> (Day Lily)			
<b>Apricot.</b> Golden yellow, 2½ ft.—June	.30	.75	2.50
<b>Flava.</b> Lemon yellow, 3 ft.—June	.30	.75	2.50
<b>Fulva.</b> Coppery orange, 4-5 ft.—July	.25	.60	2.00
<b>*Citrina.</b> Greenish yellow, 3 ft.—July	.35	1.00	3.30
<b>Florham.</b> —Golden yellow, 4 ft.—July	.30	.75	2.50
<b>Luteola.</b> Golden yellow, 4 ft.—July	.35	1.00	3.30
<b>Middendorfianna.</b> Orange yellow, 2 ft.—May	.30	.75	2.50
<b>Queen of May.</b> Bright yellow, 4 ft.—May	.35	1.00	3.30
<b>HOSTA</b> (Plantain Lily)			
<b>Plantaginea Grandiflora.</b> White, 2 ft.—Aug-Sept.	.35	1.00	3.50
<b>*Coerulea.</b> Lavender, 2 ft.—Aug.	.30	.75	2.50
<b>*Thomas Hogg.</b> Lavender, 2 ft.—Aug.	.35	1.00	3.30
<b>HIBISCUS</b> (Marsh Mallow)			
<b>Pink.</b> Pink shades, 4 ft.—July-Oct.	.35	1.00	3.30
<b>IBERIS</b> (Hardy Candy Tuft)			
<b>*Sempervirens.</b> White, 8 in.—May	.30	.75	2.50
<b>IRIS GERMANICA</b> (Fleur de lis)			
S. refers to standards or erect petals			
F. refers to falls or drooping petals			
Except where noted, 25c each \$2.00 for 10 and \$18 per 100			
(Varieties blooming April and early May)			
<b>Amas.</b> S. Bright violet blue. F. Deep violet, 3 ft.			
<b>Blue Flag.</b> S. & F. Deep purple blue, 2½ ft.			
<b>Dorothea.</b> S. & F. Milky white suffused lavender, 18 in.			
<b>Flavescens.</b> S. & F. Creamy yellow, 2½ ft.			
<b>Purple King.</b> S. & F. Dark purple, 2½ ft.			
<b>*Pumila, Atroviolacea.</b> S. & F. Dark purple, 6 in. April			
<b>*Queen Flava.</b> S. & F. Creamy yellow, 18 in.			
<b>Fritjof.</b> S. Lavender blue. F. Darker shade of lavender blue, 2 ft.			
<b>Florentina.</b> S. & F. Clear white, 3 ft.			
(Varieties blooming May 23rd on)			
<b>Albert Victor.</b> S. & F. Soft lavender blue, 3 ft.			
<b>Aurea.</b> S. & F. Rich golden yellow, late, 2 ft.			
<b>Alcazar.</b> S. Light bluish violet. F. Purple bronze throats, 3 ft.			
<b>Archeveque.</b> S. Deep biolet. F. Darkest violet purple, 18 in.	.50	1.25	4.00
<b>Caprice.</b> S. & F. Rich rosy claret, 18 in.			

Varieties marked with \* are suitable for the Rock Garden.

	Each	Three	Doz.
<b>Delilah.</b> S. Creamy white. F. Bright blood red	.50	1.25	4.00
<b>Darius.</b> S. Canary yellow. F. Light purple fading to border of cream, 18 in.			
<b>Eldorado.</b> S. Yellowish bronze. F. Violet purple tinged yellow, 3 ft.	.50	1.25	4.00
<b>Fairy.</b> S. & F. White, fragrant, 3-4 ft.			
<b>Frank M. Thomas.</b> S. Flushed violet. F. Glistening white, 3 ft.	1.75	5.00	14.00
<b>Her Majesty.</b> S. Pale lilac pink. F. Pink veined. late, 2½ ft.			
<b>Iris King.</b> S. Yellow. F. Maroon red, yellow margin, 2½ ft.			
<b>Isoline.</b> S. Lilac pink. F. Purplish rose shaded, 3 ft.			
<b>Lent Williamson.</b> S. Blue violet. F. Rich purple veined yellow, 3 ft.	.50	1.25	4.00
<b>Lohengrin.</b> S. & F. Clear lavender, 3 ft.			
<b>Mad. Pacquette.</b> S. & F. Rich rosy claret, 2½ ft.			
<b>Mrs. Neubronner.</b> S. & F. Chrome yellow, 2 ft.			
<b>*Maori King.</b> S. Yellow. F. Velvety crimson, 10 in.			
<b>Mad. Chereau.</b> S. & F. Porcelain white, blue border, 3 ft.			
<b>Mrs. Horace Darwin.</b> S. & F. White veined violet 3 ft.			
<b>*Montezuma.</b> S. & F. Golden yellow dotted purple brown, 20 in.			
<b>Mrs. Alan Grey.</b> S. & F. Pale lilac pink, early, 2 ft.			
<b>Mandalisca.</b> S. & F. Rich violet blue, 3½ ft.			
<b>Navajo.</b> S. Yellow shaded lavender. F. Maroon veined yellow, 2 ft.			
<b>Nuee D'Orange.</b> S. Slaty grey blue bronze shadings. F. Violet, 2 ft.			
<b>Prosper Langier.</b> S. Dark fawn clouded carmine. F. Carmine, 3 ft.			
<b>Pallida Dalmatica.</b> S. & F. Clear lavender blue, 3 ft.			
<b>Queen of May.</b> S. & F. Shaded lavender pink, 2½ ft.			
<b>Quaker Lady.</b> S. Smoky lavender. F. Blue shaded yellow, 2½ ft.			
<b>Rheine Nixe.</b> S. Pure white. F. Violet edged white 3½ ft.			
<b>Rose Unique.</b> S. & F. Shaded violet rose, early, 3 ft.			
<b>Twin Larches.</b> S. & F. Cream flushed & veined lilac, 3 ft.			
<b>Victorine.</b> S. White flecked deep violet. F. Deep violet, 2½ ft.			

Varieties marked with \* are suitable for the Rock Garden.

	Each	Three	Doz.
<b>IRIS LAEVIGATA</b> (Japanese Iris)			
<b>Ho-O-Jo.</b> Rich reddish purple, 6 petals, 3 ft.— July	.30	.75	2.50
<b>O-Sho-Kun.</b> Rich deep blue drooping, 3 ft.—July	.75	2.00	6.00
<b>Sano Watashi.</b> Six glistening white petals, 3 ft.— July	.30	.75	2.50
<b>Alba.</b> Three drooping white petals touched lavender, 2 ft.—July	.30	.75	2.50
<b>Tokio.</b> Six white petals striped lavender, 3 ft.— July	.30	.75	2.50
<b>Pansy Purple.</b> Six violet petals marked white, 3 ft.—July	.40	1.10	3.50
<b>SIBERIAN AND BEARDLESS IRIS</b>			
<b>Orientalis.</b> Intense violet blue, 2½ ft.—May-June	.25	.60	2.00
<b>Orientalis Snow Queen.</b> Clear white, 2½ ft.— May-June	.25	.60	2.00
<b>Emperor.</b> Intense violet blue, 4 ft.—June	.50	1.35	4.50
<b>Pseudacorus.</b> (Yellow water flag) 2-3 ft.—June	.30	.75	2.50
<b>Spuria.</b> Lavender blue with bright yellow mark- ings, 2 ft.—June	.50	1.35	4.50
<b>LIMONUM</b> (Sea Lavender)			
* <b>Latifolium.</b> (Statice Latifolia) Lavender, 2 ft.— July-Aug.	.35	1.00	3.30
<b>LINUM</b> (Flax)			
<b>Perenne.</b> Light blue, 2 ft.—June-Oct.	.30	.75	2.50
<b>LOBELIA</b>			
<b>Cardinalis.</b> (Cardinal flower) Fiery red, 3 ft.—Aug.	.30	.75	2.50
<b>MERTENSIA</b> (Brandywine Blue Bells)			
<b>Virginica.</b> Blue and pink, 18 in-2 ft.—May	.30	.75	2.50
Extra size	.50	1.40	5.00
<b>MONARDA</b> (Bergamot)			
<b>Didyma, Cambridge Scarlet.</b> Crimson, 2-3 ft.— July-Aug.	.25	.60	2.00
<b>MYOSOTIS</b> (Forget-me-not)			
* <b>Alpestris.</b> Sky blue., 8 in.—June-Sept.	.30	.75	2.50
<b>NEPETA</b>			
* <b>Hederacea.</b> (Glechoma) Evergreen creeper lavender, 3 in.	.30	.75	2.50
<b>OENOTHERA</b> (Evening Primrose)			
<b>Fruticosa Youngi.</b> Lemon yellow, 2 ft.	.50	1.35	4.50
<b>PAPAVER</b> (Iceland Poppy)			
* <b>Nudicaule.</b> Clear yellow, 18 in —May-Aug.	.30	.75	2.50

Varieties marked with \* are suitable for the Rock Garden.

	Each	Three	Doz.
<b>PAPAVER</b> (Oriental Poppy)			
(Plant in July for best results)			
<b>Oriente Mrs. Perry.</b> Salmon pink, 2-3 ft.—May June	.30	.75	2.50
<b>Oriente Goliath.</b> Bright orange scarlet, 2-3 ft.— May-June	.30	.75	2.50
<b>Oriente Mixed Hybrids.</b> Various shades, 3-3 ft. May-June	.30	.75	2.50
<b>PENSTAMON</b> (Beard Tongue)			
<b>Barbatus Torreya.</b> Scarlet, 3 ft.—June-Aug.	.25	.60	2.00
<b>PEONIES</b>			
All varieties double except where noted.			
(WHITE VARIETIES)		3-5 eyes	5-9 eyes
<b>Albatre.</b> Center petals edged crimson, large, mid season		.80	1.60
<b>Baroness Schroeder.</b> Blush White, 2½ ft., late		1.50	3.00
<b>Couronne D'Or.</b> Large, sturdy, 3 ft., late		.76	1.50
<b>Duchess DeNemours.</b> Clear sulphur white, 2½ ft., early		.65	1.25
<b>Festiva Maxima.</b> Clear large, 3 ft., early		.65	1.25
<b>Late White.</b> Glistening white on tall red stems, 3 ft.—late		.50	3.00
<b>La Rosier.</b> Cream white yellow stamens, 2½ ft.— late	1.50	1.50	3.00
<b>Mad. Emile Lemoine.</b> Semi rose type, 2 ft.—mis- season		1.50	3.00
<b>Marie Jacquin.</b> Flat semidouble, 2 ft.—early		1.00	2.00
<b>Solfaterre.</b> Creamy yellow turning white, 2 ft.— midseason		.60	1.20
<b>Whitleyi.</b> Medium size, 2½ ft.—early		.50	1.00
(PALE PINK VARIETIES)			
<b>Asa Grey.</b> Flesh pink flecked rose, 3 ft.—mid- season		1.75	
<b>Albert Crousse.</b> Clear pink fragrant, 3 ft.—late		1.50	3.00
<b>Eugene Verdier.</b> Lavender pink, 2½ ft.—mid- season		1.50	3.00
<b>Faust.</b> Guard petals rose, center pink and white, 3 ft.—early		.60	1.20
<b>Grandiflora.</b> Flesh pink, 2 ft.—late		1.50	3.00
<b>Humei Carnea.</b> Clear pink, 2½ ft.—late		.75	1.50
<b>Jeanne D'Arc.</b> Outer shaded sulphur inner rose- pink, 2 ft.—midseason		.75	1.50
<b>Late Pink.</b> Exquisite warm pink, fragrant, 2½ ft. —late		2.50	5.00

Varieties marked with \* are suitable for the Rock Garden.

	3-5 eyes	5-9 eyes
<b>La Tulipe.</b> Lilac pink, semi-rose type, 3 ft.— midseason	.75	1.50
<b>Mad. Geissler.</b> Rose pink, fragrant, midseason.	1.00	2.00
<b>Mad. Leonie Calot.</b> Light rose-pink, 2½ ft.—early	.75	1.50
<b>Mad. De Golhau.</b> Salmon pink, 2½ ft.—late	1.25	2.50
<b>Mad. De Vatrý.</b> Yellow and pink center splashed crimson pink collar	.75	1.50
<b>Marguerite Gerard.</b> Soft salmon pink, 3 ft.—late	1.25	....
<b>Mad. Emile Gallee.</b> Shell-pink, 2½ ft.—late	1.00	2.00
<b>Mons. Jules Elie.</b> Lilac rose, large, 3 ft.—early	1.25	2.50
<b>Sully Prudhomme.</b> Hydrangea pink fragrant— midseason	1.60	3.00
<b>Triomphe De L'Exposition De Lille.</b> Lilac pink midseason	— .85	1.75
<b>Lamartine.</b> Gigantic lilac rose, fragrant	3.50	....
<b>Umbellata Rosea.</b> Center cream, guard rose pink, 2½ ft.—Very early	1.00	2.00

## (DEEP PINK VARIETIES)

<b>Alexander Dumas.</b> Center rose and cream, guard rose, 2 ft.—midseason	.60	1.20
<b>Auguste Villaume.</b> Rose pink, 2½ ft.—late	1.25	2.50
<b>Duchess of Teck.</b> Brilliant rose-pink, 2 ft.—mid season	1.00	....
<b>Edulis Superba.</b> Rich rose pink, 3 ft.—very early	1.00	2.00
<b>Humei.</b> Cherry pink cinnamon fragrance.	.50	1.00
<b>Insignis.</b> Bright pink, carmine collar, 2 ft.—mid- season	.75	1.50
<b>Marie Ducl.</b> Rich lilac pink, 2 ft.—midseason	.75	1.50
<b>Modeste Guerin.</b> Fine deep pink, fragrant—late	1.00	2.00
<b>Mons. Hippolyte De Lille.</b> Deep lilac pink, fragrant 2 ft.—midseason	.60	....
<b>Officinalis.</b> Deep pink variety, 18 in.—May	1.00	2.00
<b>Single.</b> Rich warm pink, 2½ ft.—early	.75	1.50

## (RED VARIETIES)

<b>Adolph Rousseau.</b> Deep garnet red, semi-double, 3 ft.—midseason	2.00	4.00
<b>American Beauty.</b> Single amaranth red, 2 ft.— early	.75	1.50
<b>Anemoneflora Rubra.</b> Deep rose red, 2 ft.—mid- season	.60	1.20
<b>Delachii.</b> Large, dark red, 2½ ft.—late	.75	1.50
<b>Felix Crousse.</b> Brilliant cherry red—midseason	.75	1.50

Varieties marked with \* are suitable for the Rock Garden.

	3-5 eyes	5-9 eyes
<b>Mad. Bucquet.</b> Rich dark crimson, 2½ ft.—mid-season	.75	1.50
<b>Martin Cahusac.</b> Deep lustrous maroon, 2½ ft.	3.50	...
<b>Officialis Rubra Plena.</b> Bright crimson, 18 in.—May	1.00	2.00
<b>Pottsii.</b> Bright garnet red, semi-double, 3 ft.—early	.60	1.00
<b>Rubra Superba.</b> Uniform crimson, 2½ ft.—very late	.75	1.50
<b>The Moor.</b> Deep crimson red, single, 3 ft.—early	1.00	2.00
<b>Six peonies our selection of 3 varieties</b>	2.50	5.00
Peony orders amounting to \$10 to \$25 subject to 10% discount.		
Peony orders amounting to \$25 to \$50 subject to 12% discount.		
Peony orders amounting to \$100 subject to 15% discount.		

**PLUMBAGO** see **CERASTIGMA**

<b>PLATYCODON</b> (Balloon Flower)	Each	Three	Doz.
<b>Grandiflora.</b> Deep blue, 2 ft.—June-July	.30	.75	2.50
<b>Grandiflora Alba.</b> White, 2 ft.—June-July	.30	.75	2.50

**PHLOX DECUSSATA**

<b>Europa.</b> White crimson eye, large trusses	.30	.75	2.50
<b>Eugene Danzenvilliers.</b> Lavender violet, very attractive	.30	.75	2.50
<b>Homeland:</b> Dark scarlet	.50	1.35	4.50
<b>Loki.</b> Deep salmon pink, 2 ft.	.40	1.10	3.50
<b>Le Mahdi.</b> Reddish purple	.30	.75	2.50
<b>La Perle.</b> Clear white, tall—late	.30	.75	2.50
<b>Mrs. Jenkins.</b> White, large trusses	.30	.75	2.50
<b>R. P. Struthers.</b> Pure bright pink, red eye	.35	1.00	3.00
<b>Rynstroom.</b> Rich rose pink	.30	.75	2.50
<b>Rheinlander.</b> Bright salmon pink	.30	.75	2.50
<b>Thor.</b> Deep rose pink	.30	.75	2.50
<b>Special French.</b> Pale pink	.25	.60	2.00
<b>Twin Larches Seedlings.</b> Shades of clear pink	.30	.75	2.50
<b>Von Hochberg.</b> Deep lilac pink, 10 in.	.30	.75	2.50
<b>Widar.</b> Light purple striking white center	.30	.75	2.50
<b>W. C. Egan.</b> Cool pink lilac shadings	.30	.75	2.50

**PHLOX DIVARICATA**

<b>*Canadensis</b> Lavender blue, large, 10 in—April-May	.35	1.00	3.00
--	-----	------	------

Varieties marked with \* are suitable for the Rock Garden.

	Each	Three	Doz.
<b>PHLOX SUBULATA</b>			
* <i>Lilacina</i> . Lavender blue, 6 in.—April-May		.75	2.50
Clumps	.75	2.10	7.00
* <i>Alba</i> . White, 6 in.—April-May	.30	.75	2.50
* <i>Rosea</i> . Pink, 4 in.—April-May	.30	.75	2.50
<b>PHLOX SUFFRUTICOSA</b>			
Miss Lingard. White early—June-Oct.	.35	1.00	3.00
<b>PHYSALIS</b> (Chinese Lantern Plant)			
Francheti. Orange red seed pods. 18 in.	.30	.75	2.50
<b>PHYSOSTEGIA</b> (False Dragonhead)			
Virginica Alba. White, 2-4 ft.—July-Aug.	.30	.75	2.50
<b>PYRETHRUM</b> see <b>CHRYSANTHEMUM</b>			
<b>RUDBECKIA</b> (Cone flower)			
Purpurea. Light purple, red bronze center, 3 ft.— July-Aug.	.30	.75	2.50
<b>SALVIA</b>			
Farinacea. Light blue spikes, 2-3 ft.—Aug.-Sept.	.30	.75	2.50
<b>SEDUM</b> (Stonecrop)			
* <i>Acre</i> . (Golden moss) Tiny yellow flowers, 2 in.— July-Aug.	.30	.75	2.50
* <i>Album</i> . White, foliage waxy green, 4 in.	.30	.75	2.50
* <i>Pink</i> . Pink, foliage bronze green, 4 in.	.30	.75	2.50
* <i>Sieboldi</i> . Light pink, 4 in.	.35	1.00	3.00
* <i>Yellow</i> . Yellow, foliage light green, 3 in.	.30	.75	2.50
* <i>Spectabile</i> . Rosy purple, 1-2 ft.—Aug.-Sept.	.30	.75	2.50
* <i>Spectabile</i> . Lavender, 1-2 ft.—Aug.-Sept.	.30	.75	2.50
<b>STATICE</b> see <b>LIMONIUM</b>			
<b>STOKESIA CYANEA</b> (Corn flower aster)			
Coerulea. Light lavender blue, 1-2 ft.—July-Oct.	.35	1.00	3.00
<b>THALICTRUM</b> (Meadow Rue)			
Cornuti. White, 4-6 ft.—June	.30	.75	2.50
* <i>Dipterocarpum</i> . Rosy lavender, 4 ft.—Aug-Sept.	.35	1.00	3.00
<b>VERONICA</b> (Speedwell)			
Longifolia <i>Subsessilis</i> . Violet blue spikes, 2½ ft.— August	.30	.75	2.50
<i>Amethystina</i> . Rich dark blue, 18 in.—June	.30	.75	2.50
* <i>Incana</i> . Purple blue spikes, grey foliage, 8 in— July	.30	.75	2.50
* <i>Repens</i> . Blue, trailing, 3 in.—June	.30	.75	2.50
<b>VINCA</b> (Myrtle)			
* <i>Minor</i> . Lavender, evergreen creeper, 4 in.—June	.30	.75	2.50

Varieties marked with \* are suitable for the Rock Garden.



	Each	Three	Doz.
<b>VIOLA</b> (Tufted Pansy)			
<b>Cornuta, Apricot.</b> Rich apricot, 6 in. all summer	.35	1.00	3.00
<b>Cornuta, G. Wermig.</b> Violet blue, 6 in. all summer	.35	1.00	3.00
<b>Cornuta, Yellow Gem.</b> Yellow. 6 in. all summer	.30	.75	2.50
<b>YUCCA</b> (Spanish Bayonet)			
<b>Filamentosa.</b> White, evergreen leaves, 4-6 ft.— July	.50	1.35	4.00
<b>SHRUBS, VINES, MISCELLANEOUS</b>			
<b>AMPELOPSIS</b>			
<b>Hederophyla.</b> (Porcelain Ivy) Fruit bright blue— Sept.-Oct.	.30	.75	2.50
<b>BUDDLEIA</b> (Butterfly Bush)			
<b>Magnifica.</b> Lavender, 4-6 ft. July-Aug.	.60	1.50	5.00
<b>CELASTRUS</b> (Bitter Sweet)			
<b>Scandens.</b> Bright red orange berries—Sept. 2 yr.	.35	1.00	3.00
	\$20	per 100	
<b>HEDERA</b> (English Ivy)			
<b>Helix.</b> Evergreen ground cover or ivy	.35	1.00	3.00
<b>LIGUSTRUM</b> (Privet)			
<b>Ibota Regalianum.</b> (Regal Privet) Purple berries, spreading 4-6 ft, 1-2 yr.	.30	.75	2.50
<b>LONICERA</b> (Bush Honeysuckle)			
<b>Morrowi.</b> Bright red berries, 6 ft., 2 yr.	.60	1.50	5.00
<b>PYRUS JAPONICUS</b> (Japan Quince)			
<b>Red.</b> Light red, 3-4 ft.— May, 5 yr.	1.50	4.00	4.00
<b>Pink.</b> Salmon pink, May, 3-4 ft., 2 yr.	1.50	4.00	14.00
<b>ROSE CLIMBING</b>			
<b>Dr. Van Fleet.</b> Beautiful light pink, 2 yr.	.75	2.00	7.00
<b>SPIREA</b>			
<b>Henrji.</b> Large white panicles, 6-8 ft. —July-Aug.	1.50	4.25	14.00
<b>Sorbifolia.</b> White panicles, 3-4 ft.—July	.60	1.50	5.00

The following may be planted in partial shade:

<i>Sedum</i>	<i>Hemerocallis</i>
<i>Lily of the Valley</i>	<i>Asters</i>
<i>Siberian Iris</i>	<i>Yucca</i>
<i>Peonies</i>	<i>Astilbe</i>

*Aquilegia* and *Digitalis* will bloom at their best with no direct sunlight.

